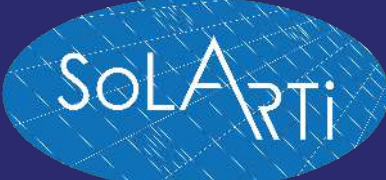
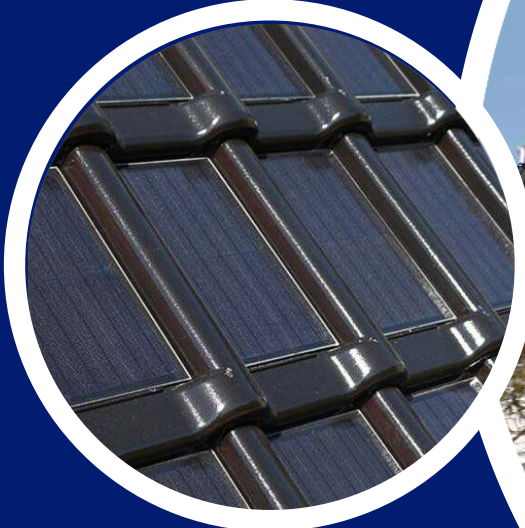


Datasheet Silverline



SOLAR ROOF TILES



Datasheet - Silverline

The Nibra F10U Silverline Solar Roof Tile is NEN-EN 1304 conformity.

Technical specifications

Maximum power	10W
Output tolerance	+ 0 - 3 %
Optimum operating voltage	1.15V
Optimum operating current	8.40A
Open circuit voltage	1.26V
Short Circuit Current (Isc)	8.77A
Maximum system voltage	600VDC
Temperature coefficient voltage	- 0.34±0.02%/° C
Temperature coefficient current	+ 0.06 ± 0.01%/° C
Temperature coefficient power	- 0.5 ± 0.05 %/° C

Maximum values

Temperature resistance	-40 °C ~ +80° C
Storage temperature	-40 °C ~ +80° C
Maximum allowed voltage insulation	600VDC
Maximum wind resistance	60 m/s
Maximum surface load	200kg/m ²
Maximum hail load	25 mm / 80 km

Mechanical specifications

Dimensions roof tile	487 x 296 mm
Covering width roof tile	242 mm +/- 1mm
Tile lath distance	419-428 mm
Weight	4.8 kg
Weight per m ²	48 kg
Number per m ²	10 stuks
Minimum roof pitch	15° / 22°
Colours	218 / 232

General data

Solar cell type	mono-crystalline silicon
Dimensions cell	156x156 mm
Shape of cell	square
4 bush bars	silver
Number of cells	2 series
Efficiency of cell	20,55%

Laminate data

Dimensions lxwxh	340x172x4,5
Material frame	none
Surface glass	hardened solar glass
Glass thickness	3.2 mm
Material	EVA
Material backsheet	TPT

STC data

AM-conditie AM	1.5
Light intensity	1000 W/m ²
Temperature	25° C

Packaging

Number per pallet	180 pc
Dimensions full pallet	100 x 120
Weight full pallet	864 kg